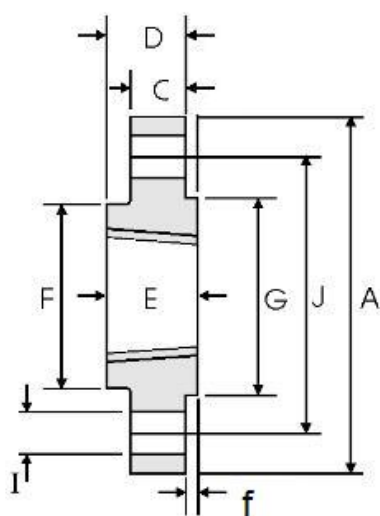


## Dimensions of threaded flanges ASME B16.5 - Class150



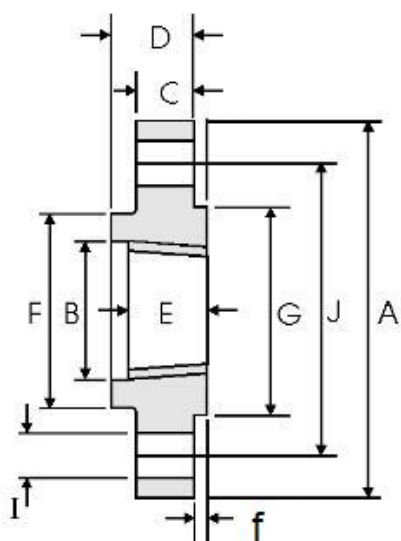
f=2mm

DN	NPS	Overall Diameter	Thickness of Flange(Min)	Overall Length	Threaded Length(Min)	Diameter of Hub	Diameter of Face	Number of Bolts	Diameter of Bolt Holes	Diameter of Bolt Circle
		A	C	D	E	F	G	H	I	J
15	1/2	90	9.6	14	16	30	34.9	4	15.7	60.3
20	3/4	100	11.2	14	16	38	42.9	4	15.7	69.9
25	1	110	12.7	16	17	49	50.8	4	15.7	79.4
32	1 ¼	115	14.3	19	21	59	63.5	4	15.7	88.9
40	1 ½	125	15.9	21	22	65	73	4	15.7	98.4
50	2	150	17.5	24	25	78	92.1	4	19.1	120.7
65	2 ½	180	20.7	27	29	90	104.8	4	19.1	139.7
80	3	190	22.3	29	30	108	127	4	19.1	152.4
90	3 ½	215	22.3	30	32	122	139.7	8	19.1	177.8
100	4	230	22.3	32	33	135	157.2	8	19.1	190.5
125	5	255	22.3	35	36	164	185.7	8	22.4	215.9
150	6	280	23.9	38	40	192	215.9	8	22.4	241.3
200	8	345	27	43	44	246	269.9	8	22.4	298.5
250	10	405	28.6	48	49	305	323.8	12	25.4	362
300	12	485	30.2	54	56	365	381	12	25.4	431.8
350	14	535	33.4	56	57	400	412.8	12	28.4	476.3
400	16	595	35	62	64	457	469.9	16	28.4	539.8
450	18	635	38.1	67	68	505	533.4	16	31.75	577.9
500	20	700	41.3	71	73	559	584.2	20	31.75	635
600	24	815	46.1	81	83	663	692.2	20	35.1	749.3

Class 150 flanges are made without a counterbore.

Threaded flanges shall have a taper pipe thread conforming to ASME B1.20.1.

## Dimensions of threaded flanges ASME B16.5 – Class300



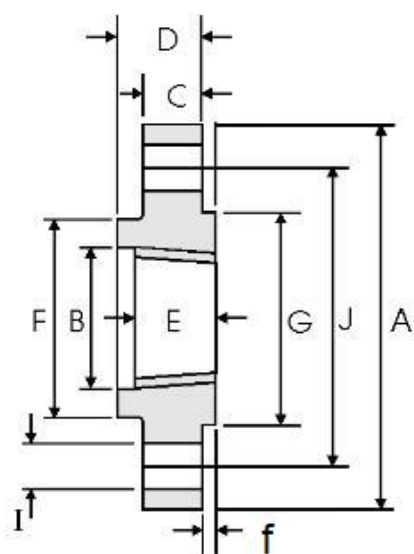
f=2mm

DN	NPS	Overall Diameter	Counter-bore(Min.)	Thickness of Flange(Min)	Overall Length	Threaded Length(Min)	Diameter of Hub	Diameter of Face	Number of Bolts	Diameter of Bolt Holes	Diameter of Bolt Circle
		A	B	C	D	E	F	G	H	I	J
15	1/2	95	23.6	12.7	21	16	38	34.9	4	15.7	66.7
20	3/4	115	29	14.3	24	16	48	42.9	4	19	82.6
25	1	125	35.8	15.9	25	18	54	50.8	4	19	88.9
32	1 ¼	135	44.4	17.5	25	21	64	63.5	4	19	98.4
40	1 ½	155	50.3	19.1	29	23	70	73	4	22.3	114.3
50	2	165	63.5	20.7	32	29	84	92.1	8	19	127
65	2 ½	190	76.2	23.9	37	32	100	104.8	8	22.3	149.2
80	3	210	92.2	27	41	32	117	127	8	22.3	168.3
90	3 ½	230	104.9	28.6	43	37	133	139.7	8	22.3	184.2
100	4	255	117.6	30.2	46	37	146	157.2	8	22.3	200
125	5	280	144.4	33.4	49	43	178	185.7	8	22.3	235
150	6	320	171.4	35	51	47	206	215.9	12	22.3	269.9
200	8	380	222.2	39.7	60	51	260	269.9	12	25.4	330.2
250	10	445	276.2	46.1	65	56	321	323.8	16	28.4	387.4
300	12	520	328.6	49.3	71	61	375	381	16	31.7	450.8
350	14	585	360.4	52.4	75	64	425	412.8	20	31.7	514.4
400	16	650	411.2	55.6	81	69	483	469.9	20	35	571.5
450	18	710	462	58.8	87	70	533	533.4	24	35	628.6
500	20	775	512.8	62	94	74	587	584.2	24	35	685.8
600	24	915	614.4	68.3	105	83	702	692.2	24	41.1	812.8

Class 300 and higher threaded flanges are counter-bored. Threads are chamfered to the counterbore at an angle of 45°

Threaded flanges shall have a taper pipe thread conforming to ASME B1.20.1.

## Dimensions of threaded flanges ASME B16.5 – Class400



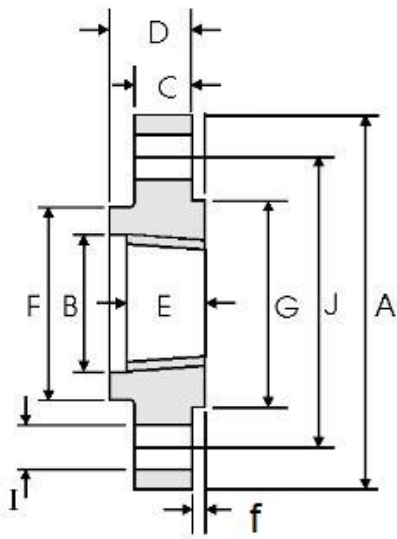
f=7mm

DN	NPS	Overall Diameter	Counter-bore(Min.)	Thickness of Flange(Min)	Overall Length	Threaded Length(Min)	Diameter of Hub	Diameter of Face	Number of Bolts	Diameter of Bolt Holes	Diameter of Bolt Circle
		A	B	C	D	E	F	G		H	I
15	1/2	95	23.6	14.3	22	16	38	34.9	4	15.7	66.7
20	3/4	115	29	15.9	25	16	48	42.9	4	19	82.6
25	1	125	35.8	17.5	27	18	54	50.8	4	19	88.9
32	1 ¼	135	44.4	20.7	29	21	64	63.5	4	19	98.4
40	1 ½	155	50.6	22.3	32	23	70	73	4	22.3	114.3
50	2	165	63.5	25.4	37	29	84	92.1	8	19	127
65	2 ½	190	76.2	28.6	41	32	100	104.8	8	22.3	149.2
80	3	210	92.2	31.8	46	35	117	127	8	22.3	168.3
90	3 ½	230	104.9	35	49	40	133	139.7	8	25.4	184.2
100	4	255	117.6	35	51	37	146	157.2	8	25.4	200
125	5	280	144.4	38.1	54	43	178	185.7	8	25.4	235
150	6	320	171.4	41.3	57	46	206	215.9	12	35.4	269.9
200	8	380	222.2	47.7	68	51	260	269.9	12	28.4	330.2
250	10	445	276.2	54	73	56	321	323.8	16	31.75	387.4
300	12	520	328.6	57.2	79	61	375	381	16	35.1	450.8
350	14	585	360.4	60.4	84	64	425	412.8	20	35.1	514.4
400	16	650	411.2	63.5	94	69	483	469.9	20	38.1	571.5
450	18	710	462	66.7	98	70	533	533.4	24	38.1	628.6
500	20	775	512.8	69.9	102	74	587	584.2	24	41.1	685.8
600	24	915	614.4	76.2	114	83	702	692.2	24	47.8	812.8

Class 300 and higher threaded flanges are counter-bored. Threads are chamfered to the counterbore at an angle of 45°

Threaded flanges shall have a taper pipe thread conforming to ASME B1.20.1.

## Dimensions of threaded flanges ASME B16.5 – Class600



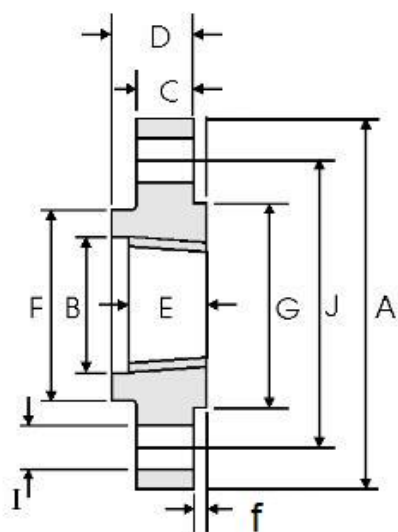
f=7mm

DN	NPS	Overall Diameter	Counter-bore(Min.)	Thickness of Flange(Min)	Overall Length	Threaded Length(Min)	Diameter of Hub	Diameter of Face	Number of Bolts	Diameter of Bolt Holes	Diameter of Bolt Circle
		A	B	C	D	E	F	G	H	I	J
15	1/2	95	23.6	14.3	22	16	38	34.9	4	15.7	66.7
20	3/4	115	29	15.9	25	16	48	42.9	4	19	82.6
25	1	125	35.8	17.5	27	18	54	50.8	4	19	88.9
32	1 ¼	135	44.4	20.7	29	21	64	63.5	4	19	98.4
40	1 ½	155	50.6	22.3	32	23	70	73	4	22.3	114.3
50	2	165	63.5	25.4	37	29	84	92.1	8	19	127
65	2 ½	190	76.2	28.6	41	32	100	104.8	8	22.3	149.2
80	3	210	92.2	31.8	46	35	117	127	8	22.3	168.3
90	3 ½	230	104.9	35	49	40	133	139.7	8	25.4	184.2
100	4	275	117.6	38.1	54	42	152	157.2	8	25.4	215.9
125	5	330	144.4	44.5	60	48	189	185.7	8	28.4	266.7
150	6	355	171.4	47.7	67	51	222	215.9	12	28.4	292.1
200	8	420	222.2	55.6	76	58	273	269.9	12	31.75	349.2
250	10	510	276.2	63.5	86	66	343	323.8	16	35.1	431.8
300	12	560	328.6	66.7	92	70	400	381	20	35.1	489
350	14	605	360.4	69.9	94	74	432	412.8	20	38.1	527
400	16	685	411.2	76.2	106	78	495	469.9	20	41.1	603.2
450	18	745	462	82.6	117	80	546	533.4	20	44.5	654
500	20	815	512.8	88.9	127	83	610	584.2	24	44.5	723.9
600	24	940	614.4	101.6	140	93	718	692.2	24	50.8	838.2

Class 300 and higher threaded flanges are counter-bored. Threads are chamfered to the counterbore at an angle of 45°

Threaded flanges shall have a taper pipe thread conforming to ASME B1.20.1.

## Dimensions of threaded flanges ASME B16.5 – Class900



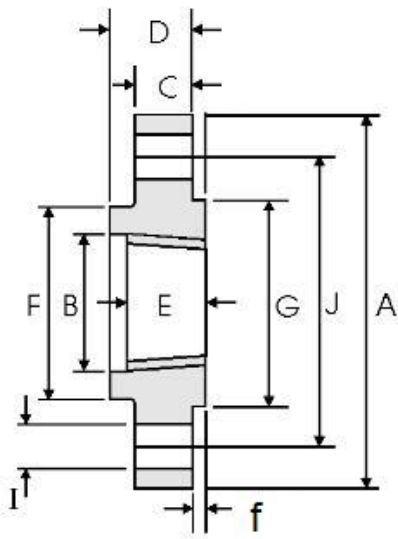
f=7mm

DN	NPS	Overall Diameter	Counter-bore(Min.)	Thickness of Flange(Min)	Overall Length	Threaded Length(Min)	Diameter of Hub	Diameter of Face	Number of Bolts	Diameter of Bolt Holes	Diameter of Bolt Circle
		A	B	C	D	E	F	G	H	I	J
15	1/2	120	23.6	22.3	32	23	38	34.9	4	22.3	82.6
20	3/4	130	29	25.4	35	26	44	42.9	4	22.3	88.9
25	1	150	35.8	28.6	41	29	52	50.8	4	25.4	101.6
32	1 ¼	160	44.4	28.6	41	31	64	63.5	4	25.4	111.1
40	1 ½	180	50.6	31.8	44	32	70	73	4	28.4	123.8
50	2	215	63.5	38.1	57	39	105	92.1	8	25.4	165.1
65	2 ½	245	76.2	41.3	64	48	124	104.8	8	28.4	190.5
80	3	240	92.2	38.1	54	42	127	127	8	25.4	190.5
100	4	290	117.6	44.5	70	48	159	157.2	8	31.7	235
125	5	350	144.4	50.8	79	54	190	185.7	8	35	279.4
150	6	380	171.4	55.6	86	58	235	215.9	12	31.7	317.5
200	8	470	222.2	63.5	102	64	298	269.9	12	38.1	393.7
250	10	545	276.2	69.9	108	72	368	323.8	16	38.1	469.9
300	12	610	328.6	79.4	117	77	419	381	20	38.1	533.4
350	14	640	360.4	85.8	130	83	451	412.8	20	41.1	558.8
400	16	705	411.2	88.9	133	86	508	469.9	20	44.4	616
450	18	785	462	101.6	152	89	565	533.4	20	50.8	685.8
500	20	855	512.8	108	159	93	622	584.2	20	53.8	749.3
600	24	1040	614.4	139.7	203	102	749	692.2	20	66.55	901.7

Class 300 and higher threaded flanges are counter-bored. Threads are chamfered to the counterbore at an angle of 45°

Threaded flanges shall have a taper pipe thread conforming to ASME B1.20.1.

## Dimensions of threaded flanges ASME B16.5 - Class1500



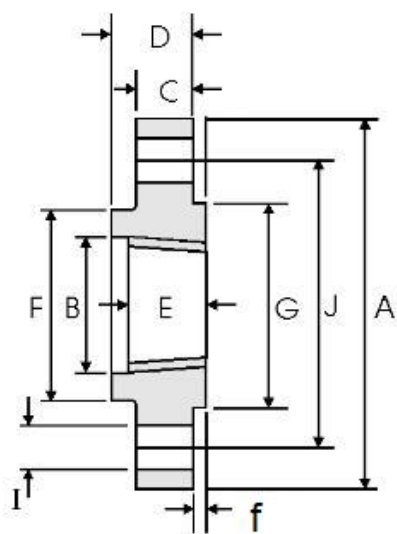
f=7mm

DN	NPS	Overall Diameter	Counter-bore(Min.)	Thickness of Flange(Min)	Overall Length	Threaded Length(Min)	Diameter of Hub	Diameter of Face	Number of Bolts	Diameter of Bolt Holes	Diameter of Bolt Circle
		<b>A</b>	<b>B</b>	<b>C</b>	<b>D</b>	<b>E</b>	<b>F</b>	<b>G</b>	<b>H</b>	<b>I</b>	<b>J</b>
15	1/2	120	23.6	22.3	32	23	38	34.9	4	22.3	82.6
20	3/4	130	29	25.4	35	26	44	42.9	4	22.3	88.9
25	1	150	35.8	28.6	41	29	52	50.8	4	25.4	101.6
32	1 ¼	160	44.4	28.6	41	31	64	63.5	4	25.4	111.1
40	1 ½	180	50.6	31.8	44	32	70	73	4	28.4	123.8
50	2	215	63.5	38.1	57	39	105	92.1	8	25.4	165.1
65	2 ½	245	76.2	41.3	64	48	124	104.8	8	28.4	190.5

Class 300 and higher threaded flanges are counter-bored. Threads are chamfered to the counterbore at an angle of 45°

Threaded flanges shall have a taper pipe thread conforming to ASME B1.20.1.

## Dimensions of threaded flanges ASME B16.5 – Class2500



f=7mm

DN	NPS	Overall Diameter	Counter-bore(Min.)	Thickness of Flange(Min)	Overall Length	Threaded Length(Min)	Diameter of Hub	Diameter of Face	Number of Bolts	Diameter of Bolt Holes	Diameter of Bolt Circle
		<b>A</b>	<b>B</b>	<b>C</b>	<b>D</b>	<b>E</b>	<b>F</b>	<b>G</b>	<b>H</b>	<b>I</b>	<b>J</b>
15	1/2	135	23.6	30.2	40	29	43	34.9	4	22.3	88.9
20	3/4	140	29	31.8	43	32	51	42.9	4	22.3	95.2
25	1	160	35.8	35	48	35	57	50.8	4	25.4	108
32	1 ¼	185	44.4	38.1	52	39	73	63.5	4	28.4	130.2
40	1 ½	205	50.6	44.5	60	45	79	73	4	31.75	146
50	2	235	63.5	50.9	70	51	95	92.1	8	28.4	171.4
65	2 ½	265	76.2	57.2	79	58	114	104.8	8	31.75	196.8

Class 300 and higher threaded flanges are counter-bored. Threads are chamfered to the counterbore at an angle of 45°

Threaded flanges shall have a taper pipe thread conforming to ASME B1.20.1.