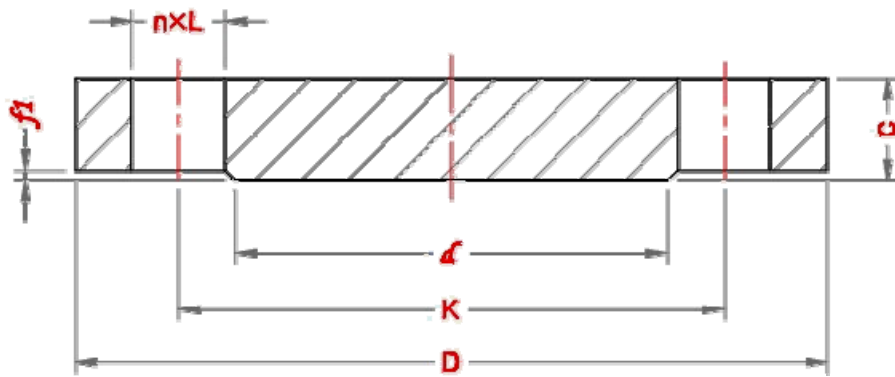
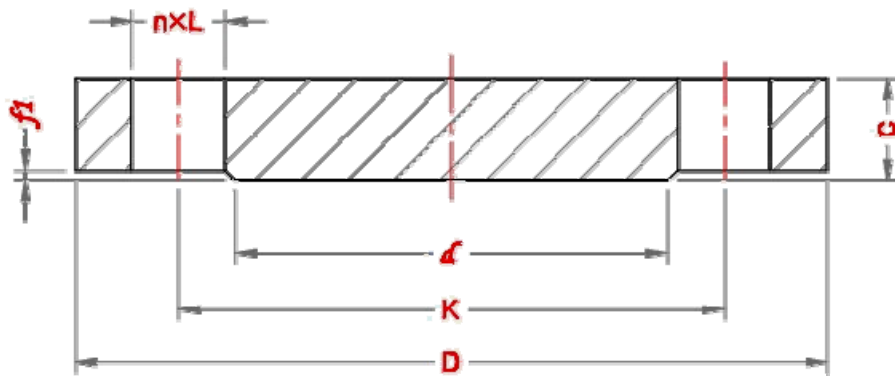


Dimensions of blind flanges – EN1092-1 Type 05 / PN2.5



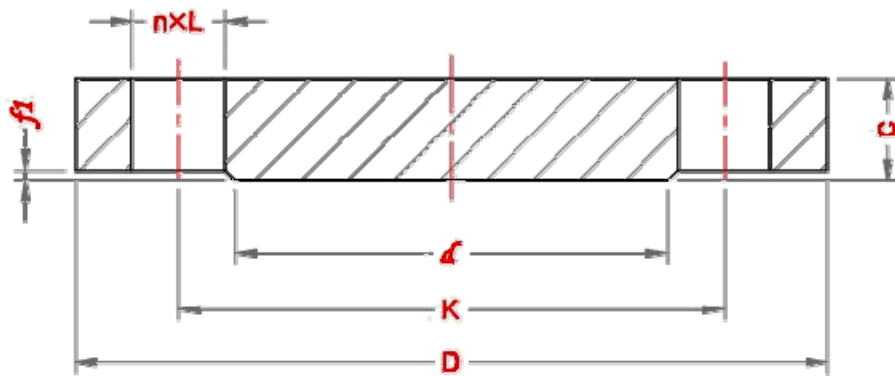
DN	Outside Diameter, D	Diameter of Bolt Circle, K	Dia of Bolt Hole, L	No. of bolt	Size of Bolt	Flange thickness, C	Diameter of Raised Face, d	Height of Raised Face, f1
10	75	50	11	4	M10	12	35	2
15	80	55	11	4	M10	12	40	2
20	90	65	11	4	M10	14	50	2
25	100	75	11	4	M10	14	60	2
32	120	90	14	4	M12	14	70	2
40	130	100	14	4	M12	14	80	3
50	140	110	14	4	M12	14	90	3
65	160	130	14	4	M12	14	110	3
80	190	150	18	4	M16	16	128	3
100	210	170	18	4	M16	16	148	3
125	240	200	18	8	M16	18	178	3
150	265	225	18	8	M16	18	202	3
200	320	280	18	8	M16	20	258	3
250	375	335	18	12	M16	22	312	3
300	440	395	22	12	M20	22	365	4
350	490	445	22	12	M20	22	415	4
400	540	495	22	16	M20	22	455	4
450	595	550	22	16	M20	24	520	4
500	645	600	22	20	M20	24	570	4
600	755	705	26	20	M24	30	670	5
700	860	810	26	24	M24	40	775	5
800	975	920	30	24	M27	44	880	5
900	1075	1020	30	24	M27	48	980	5
1000	1175	1120	30	28	M27	52	1080	5
1200	1375	1320	30	32	M27	50	1280	5
1400	1575	1520	30	36	M27	57	1480	5
1600	1790	1730	30	40	M27	64	1690	5
1800	1990	1930	30	44	M27	70	1890	5
2000	2190	2130	30	48	M27	78	2090	5

Dimensions of blind flanges – EN1092-1 Type 05 / PN6



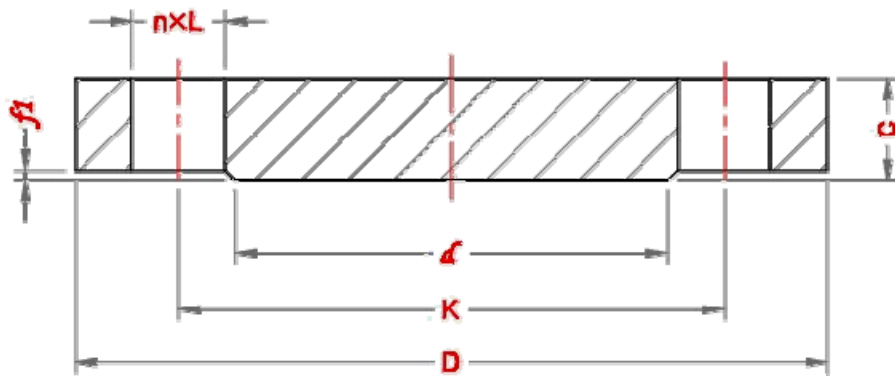
DN	Outside Diameter, D	Diameter of Bolt Circle, K	Dia of Bolt Hole, L	No. of bolt	Size of Bolt	Flange thickness, C	Diameter of Raised Face, d	Height of Raised Face, f1
10	75	50	11	4	M10	12	35	2
15	80	55	11	4	M10	12	40	2
20	90	65	11	4	M10	14	50	2
25	100	75	11	4	M10	14	60	2
32	120	90	14	4	M12	14	70	2
40	130	100	14	4	M12	14	80	3
50	140	110	14	4	M12	14	90	3
65	160	130	14	4	M12	14	110	3
80	190	150	18	4	M16	16	128	3
100	210	170	18	4	M16	16	148	3
125	240	200	18	8	M16	18	178	3
150	265	225	18	8	M16	18	202	3
200	320	280	18	8	M16	20	258	3
250	375	335	18	12	M16	22	312	3
300	440	395	22	12	M20	22	365	4
350	490	445	22	12	M20	22	415	4
400	540	495	22	16	M20	22	455	4
450	595	550	22	16	M20	24	520	4
500	645	600	22	20	M20	24	570	4
600	755	705	26	20	M24	30	670	5
700	860	810	26	24	M24	40	775	5
800	975	920	30	24	M27	44	880	5
900	1075	1020	30	24	M27	48	980	5
1000	1175	1120	30	28	M27	52	1080	5
1200	1405	1340	33	32	M30	60	1295	5
1400	1630	1560	36	36	M33	68	1510	5
1600	1830	1760	36	40	M33	76	1710	5
1800	2045	1970	39	44	M36	84	1920	5
2000	2265	2180	42	48	M39	92	2125	5

Dimensions of blind flanges – EN1092-1 Type 05 / PN10



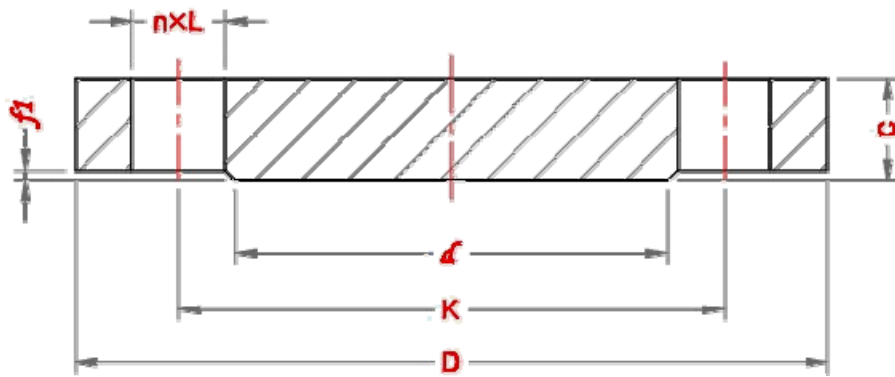
DN	Outside Diameter, D	Diameter of Bolt Circle, K	Dia of Bolt Hole, L	No. of bolt	Size of Bolt	Flange thickness, C	Diameter of Raised Face, d	Height of Raised Face, f1
10	90	60	14	4	M12	16	40	2
15	95	65	14	4	M12	16	45	2
20	105	75	14	4	M12	18	58	2
25	115	85	14	4	M12	18	68	2
32	140	100	18	4	M16	18	78	2
40	150	110	18	4	M16	18	88	3
50	165	125	18	4	M16	18	102	3
65	185	145	18	8	M16	18	122	3
80	200	160	18	8	M16	20	138	3
100	220	180	18	8	M16	20	158	3
125	250	210	18	8	M16	22	188	3
150	285	240	22	8	M20	22	212	3
200	340	295	22	8	M20	24	268	3
250	395	350	22	12	M20	26	320	3
300	445	400	22	12	M20	26	370	4
350	505	460	22	16	M20	26	430	4
400	565	515	26	16	M24	26	482	4
450	615	565	26	20	M24	28	532	4
500	670	620	26	20	M24	28	585	4
600	780	725	30	20	M27	34	685	5
700	895	840	30	24	M27	38	800	5
800	1015	950	33	24	M30	48	905	5
900	1115	1050	33	28	M30	50	1005	5
1000	1230	1160	36	28	M33	54	1110	5
1200	1455	1380	39	32	M36	66	1330	5
1400	1675	1590	42	36	M39	72	1535	5
1600	1915	1820	48	40	M45	82	1760	5
1800	2115	2020	48	44	M45	92	1960	5
2000	2325	2230	48	48	M45	100	2170	5

Dimensions of blind flanges – EN1092-1 Type 05 / PN16



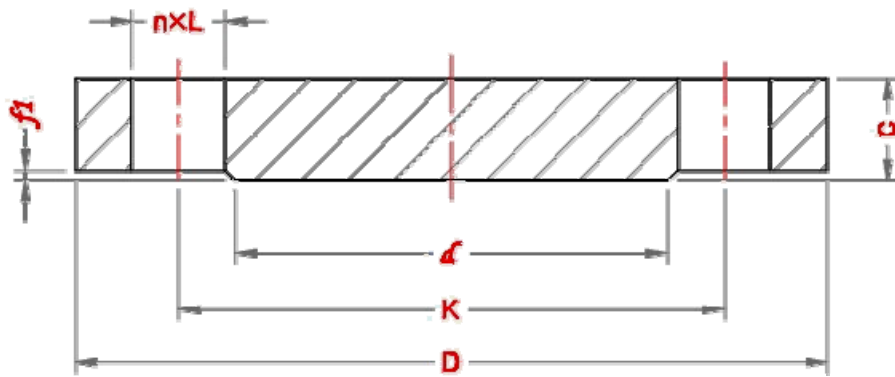
DN	Outside Diameter, D	Diameter of Bolt Circle, K	Dia of Bolt Hole, L	No. of bolt	Size of Bolt	Flange thickness, C	Diameter of Raised Face, d	Height of Raised Face, f1
10	90	60	14	4	M12	16	40	2
15	95	65	14	4	M12	16	45	2
20	105	75	14	4	M12	18	58	2
25	115	85	14	4	M12	18	68	2
32	140	100	18	4	M16	18	78	2
40	150	110	18	4	M16	18	88	3
50	165	125	18	4	M16	18	102	3
65	185	145	18	8	M16	18	122	3
80	200	160	18	8	M16	20	138	3
100	220	180	18	8	M16	20	158	3
125	250	210	18	8	M16	22	188	3
150	285	240	22	8	M20	22	212	3
200	340	295	22	12	M20	24	268	3
250	405	355	26	12	M24	26	320	3
300	460	410	26	12	M24	28	378	4
350	520	470	26	16	M24	30	438	4
400	580	525	30	16	M27	32	490	4
450	640	585	30	20	M27	40	550	4
500	715	650	33	20	M30	44	610	4
600	840	770	36	20	M33	54	725	5
700	910	840	36	24	M33	58	795	5
800	1025	950	39	24	M36	62	900	5
900	1125	1050	39	28	M36	64	1000	5
1000	1255	1170	42	28	M39	68	1115	5
1200	1485	1390	48	32	M45	86	1330	5
1400	1685	1590	48	36	M45	94	1530	5
1600	1930	1820	56	40	M52	112	1750	5
1800	2130	2020	56	44	M52	121	1950	5
2000	2345	2230	62	48	M56	136	2150	5

Dimensions of blind flanges – EN1092-1 Type 05 / PN25



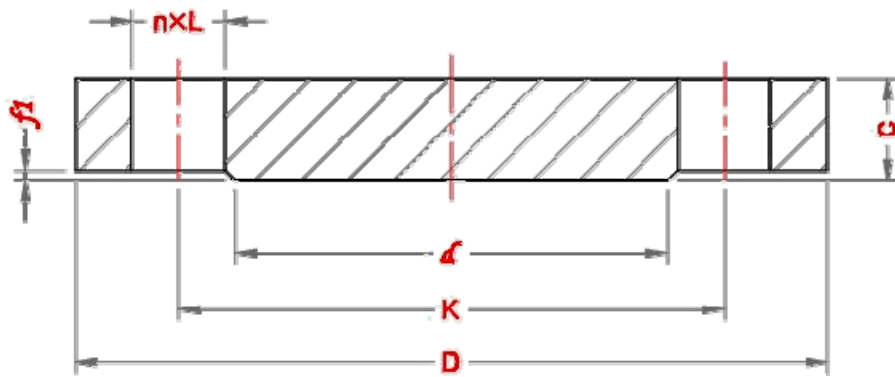
DN	Outside Diameter, D	Diameter of Bolt Circle, K	Dia of Bolt Hole, L	No. of bolt	Size of Bolt	Flange thickness, C	Diameter of Raised Face, d	Height of Raised Face, f1
10	90	60	14	4	M12	16	40	2
15	95	65	14	4	M12	16	45	2
20	105	75	14	4	M12	18	58	2
25	115	85	14	4	M12	18	68	2
32	140	100	18	4	M16	18	78	2
40	150	110	18	4	M16	18	88	3
50	165	125	18	4	M16	20	102	3
65	185	145	18	8	M16	22	122	3
80	200	160	18	8	M16	24	138	3
100	235	190	22	8	M20	24	162	3
125	270	220	26	8	M24	26	188	3
150	300	250	26	8	M24	28	218	3
200	360	310	26	12	M24	30	278	3
250	435	370	30	12	M27	32	335	3
300	485	430	30	16	M27	34	395	4
350	555	490	33	16	M30	38	450	4
400	620	550	36	16	M33	40	505	4
450	670	600	36	20	M33	50	555	4
500	730	660	36	20	M33	51	615	4
600	845	770	39	20	M36	66	720	5

Dimensions of blind flanges – EN1092-1 Type 05 / PN40



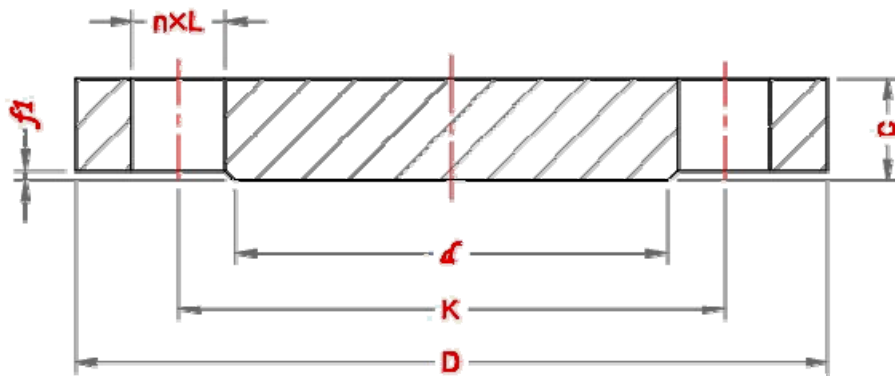
DN	Outside Diameter, D	Diameter of Bolt Circle, K	Dia of Bolt Hole, L	No. of bolt	Size of Bolt	Flange thickness, C	Diameter of Raised Face, d	Height of Raised Face, f1
10	90	60	14	4	M12	16	40	2
15	95	65	14	4	M12	16	45	2
20	105	75	14	4	M12	18	58	2
25	115	85	14	4	M12	18	68	2
32	140	100	18	4	M16	18	78	2
40	150	110	18	4	M16	18	88	3
50	165	125	18	4	M16	20	102	3
65	185	145	18	8	M16	22	122	3
80	200	160	18	8	M16	24	138	3
100	235	190	22	8	M20	24	162	3
125	270	220	26	8	M24	26	188	3
150	300	250	26	8	M24	28	218	3
200	375	320	30	12	M27	36	285	3
250	450	385	33	12	M30	38	345	3
300	515	450	33	16	M30	42	410	4
350	580	510	36	16	M33	46	465	4
400	660	585	39	16	M36	50	535	4
450	685	610	39	20	M36	57	560	4
500	755	670	42	20	M39	57	615	4
600	890	795	48	20	M45	72	735	5

Dimensions of blind flanges – EN1092-1 Type 05 / PN63



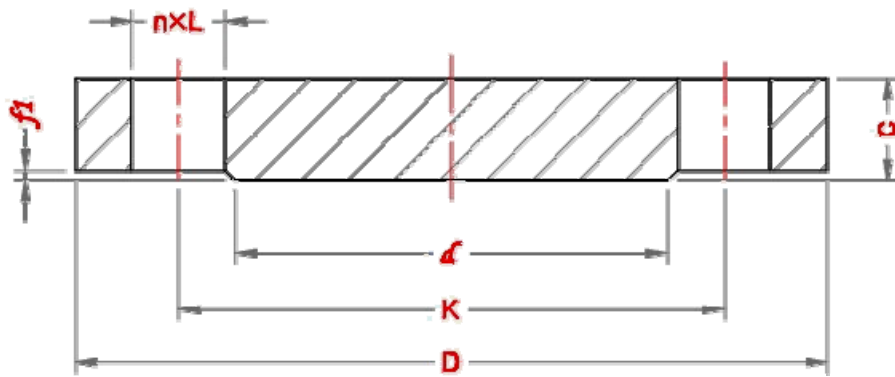
DN	Outside Diameter, D	Diameter of Bolt Circle, K	Dia of Bolt Hole, L	No. of bolt	Size of Bolt	Flange thickness, C	Diameter of Raised Face, d	Height of Raised Face, f1
10	100	70	14	4	M12	20	40	2
15	105	75	14	4	M12	20	45	2
20	130	90	18	4	M16	22	58	2
25	140	100	18	4	M16	24	68	2
32	155	110	22	4	M20	24	78	2
40	170	125	22	4	M20	26	88	3
50	180	135	22	4	M20	26	102	3
65	205	160	22	8	M20	26	122	3
80	215	170	22	8	M20	28	138	3
100	250	200	26	8	M24	30	162	3
125	295	240	30	8	M27	34	188	3
150	345	280	33	8	M30	36	218	3
200	415	345	36	12	M33	42	285	3
250	470	400	36	12	M33	46	345	3
300	530	460	36	16	M33	52	410	4
350	600	525	39	16	M36	56	465	4
400	670	585	42	16	M39	60	535	4

Dimensions of blind flanges – EN1092-1 Type 05 / PN100



DN	Outside Diameter, D	Diameter of Bolt Circle, K	Dia of Bolt Hole, L	No. of bolt	Size of Bolt	Flange thickness, C	Diameter of Raised Face, d	Height of Raised Face, f1
10	100	70	14	4	M12	20	40	2
15	105	75	14	4	M12	20	45	2
20	130	90	18	4	M16	22	58	2
25	140	100	18	4	M16	24	68	2
32	155	110	22	4	M20	24	78	2
40	170	125	22	4	M20	26	88	3
50	195	145	26	4	M24	28	102	3
65	220	170	26	8	M24	30	122	3
80	230	180	26	8	M24	32	138	3
100	265	210	30	8	M27	36	162	3
125	315	250	33	8	M30	40	188	3
150	355	290	33	12	M30	44	218	3
200	430	360	36	12	M33	52	285	3
250	505	430	39	12	M36	60	345	3
300	585	500	42	16	M39	68	410	4
350	655	560	48	16	M45	74	465	4

Dimensions of blind flanges – EN1092-1 Type 05 / PN160



DN	Outside Diameter, D	Diameter of Bolt Circle, K	Dia of Bolt Hole, L	No. of bolt	Size of Bolt	Flange thickness, C	Diameter of Raised Face, d	Height of Raised Face, f1
10	100	70	14	4	M12	24	40	2
15	105	75	14	4	M12	26	45	2
20	130	90	18	4	M16	30	58	2
25	140	100	18	4	M16	32	68	2
32	155	110	22	4	M20	34	78	2
40	170	125	22	4	M20	36	88	3
50	195	145	26	4	M24	38	102	3
65	220	170	26	8	M24	42	122	3
80	230	180	26	8	M24	46	138	3
100	265	210	30	8	M27	52	162	3
125	315	250	33	8	M30	56	188	3
150	355	290	33	12	M30	62	218	3
200	430	360	36	12	M33	66	285	3
250	515	430	42	12	M39	76	345	3
300	585	500	42	16	M39	88	410	4