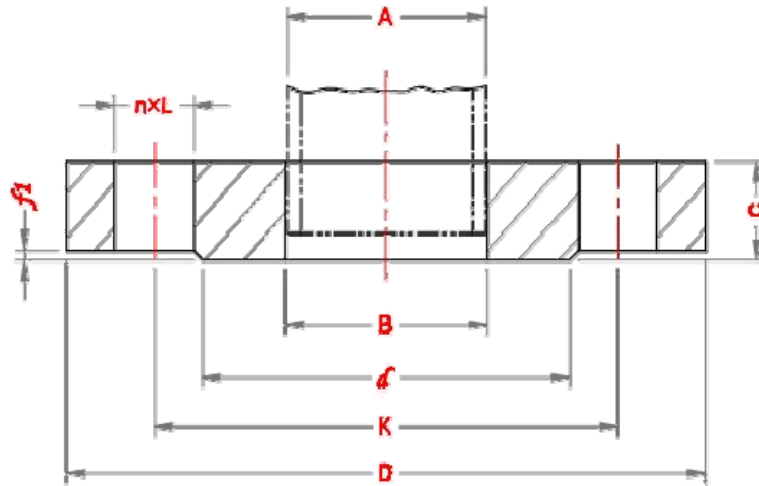
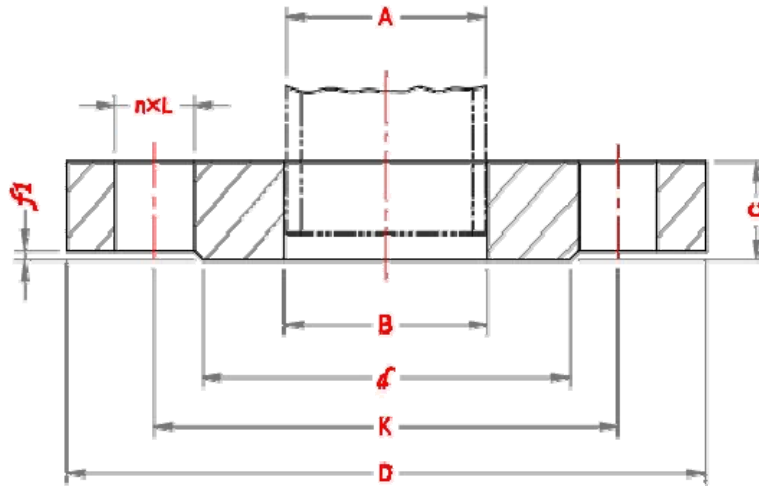


## Dimensions of plate flanges EN 1092-1 Type 01 / PN2.5



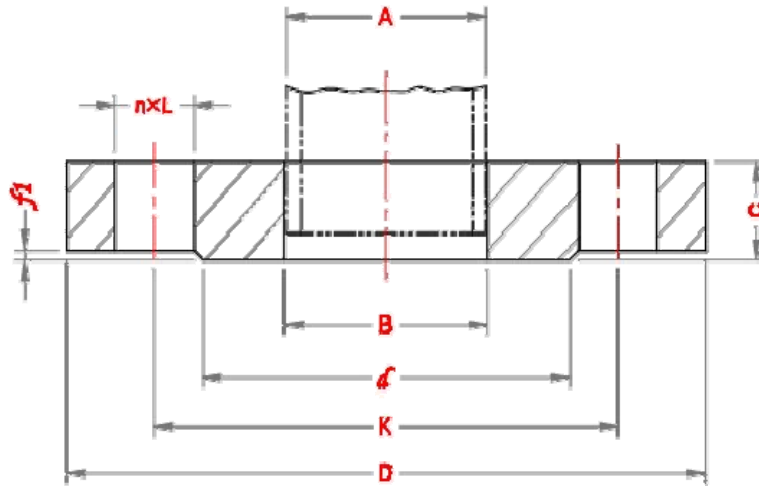
DN	Pipe OD, A	Outside Diameter, D	Diameter of Bolt Circle, K	Dia of Bolt Hole, L	No. of bolt	Size of Bolt	Flange thickness, C	Diameter of Raised Face, d	Height of Raised Face, f1	Bore diameter, B
10	17.2	75	50	11	4	M10	12	35	2	18
15	21.3	80	55	11	4	M10	12	40	2	22
20	26.9	90	65	11	4	M10	14	50	2	27.5
25	33.7	100	75	11	4	M10	14	60	2	34.5
32	42.4	120	90	14	4	M12	16	70	2	43.5
40	48.3	130	100	14	4	M12	16	80	3	49.5
50	60.3	140	110	14	4	M12	16	90	3	61.5
65	76.1	160	130	14	4	M12	16	110	3	77.5
80	88.9	190	150	18	4	M16	18	128	3	90.5
100	114.3	210	170	18	4	M16	18	148	3	116
125	139.7	240	200	18	8	M16	20	178	3	141.5
150	168.3	265	225	18	8	M16	20	202	3	170.5
200	219.1	320	280	18	8	M16	22	258	3	221.5
250	273	375	335	18	12	M16	24	312	3	276.5
300	323.9	440	395	22	12	M20	24	365	4	327.5
350	355.6	490	445	22	12	M20	26	415	4	359.5
400	406.4	540	495	22	16	M20	28	455	4	411
450	457	595	550	22	16	M20	30	520	4	462
500	508	645	600	22	20	M20	30	570	4	513.5
600	610	755	705	26	20	M24	32	670	5	616.5
700	711	860	810	26	24	M24	40	775	5	715
800	813	975	920	30	24	M27	44	880	5	817
900	914	1075	1020	30	24	M27	48	980	5	918
1000	1016	1175	1120	30	28	M27	52	1080	5	1020
1200	1219	1375	1320	30	32	M27	60	1280	5	1223

## Dimensions of plate flanges EN 1092-1 Type 01 / PN6



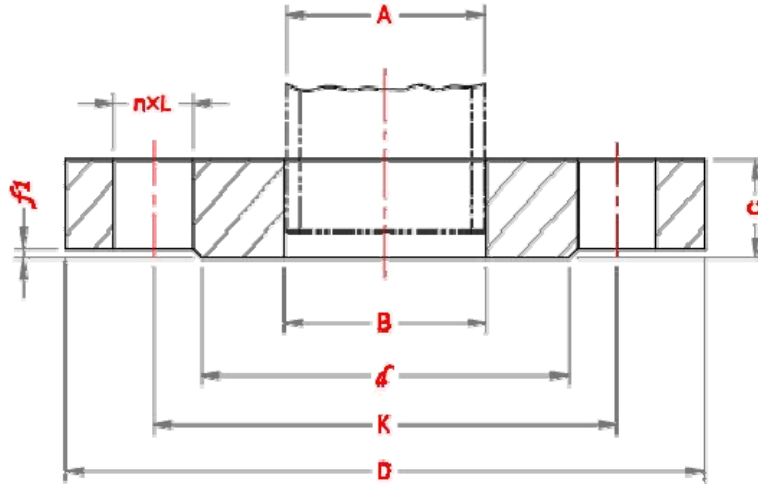
DN	Pipe OD, A	Outside Diameter, D	Diameter of Bolt Circle, K	Dia of Bolt Hole, L	No. of bolt	Size of Bolt	Flange thickness, C	Diameter of Raised Face, d	Height of Raised Face, f1	Bore diameter, B
10	17.2	75	50	11	4	M10	12	35	2	18
15	21.3	80	55	11	4	M10	12	40	2	22
20	26.9	90	65	11	4	M10	14	50	2	27.5
25	33.7	100	75	11	4	M10	14	60	2	34.5
32	42.4	120	90	14	4	M12	16	70	2	43.5
40	48.3	130	100	14	4	M12	16	80	3	49.5
50	60.3	140	110	14	4	M12	16	90	3	61.5
65	76.1	160	130	14	4	M12	16	110	3	77.5
80	88.9	190	150	18	4	M16	18	128	3	90.5
100	114.3	210	170	18	4	M16	18	148	3	116
125	139.7	240	200	18	8	M16	20	178	3	141.5
150	168.3	265	225	18	8	M16	20	202	3	170.5
200	219.1	320	280	18	8	M16	22	258	3	221.5
250	273	375	335	18	12	M16	24	312	3	276.5
300	323.9	440	395	22	12	M20	24	365	4	327.5
350	355.6	490	445	22	12	M20	26	415	4	359.5
400	406.4	540	495	22	16	M20	28	455	4	411
450	457	595	550	22	16	M20	30	520	4	462
500	508	645	600	22	20	M20	30	570	4	513.5
600	610	755	705	26	20	M24	32	670	5	616.5
700	711	860	810	26	24	M24	40	775	5	715
800	813	975	920	30	24	M27	44	880	5	817
900	914	1075	1020	30	24	M27	48	980	5	918
1000	1016	1175	1120	30	28	M27	52	1080	5	1020
1200	1219	1405	1340	33	32	M30	60	1295	5	1223
1400	1422	1630	1560	36	36	M33	72	1510	5	1426
1600	1626	1830	1760	36	40	M33	80	1710	5	1630
1800	1829	2045	1970	39	44	M36	88	1920	5	1833
2000	2032	2265	2180	42	48	M39	96	2125	5	2036

## Dimensions of plate flanges EN 1092-1 Type 01 / PN10



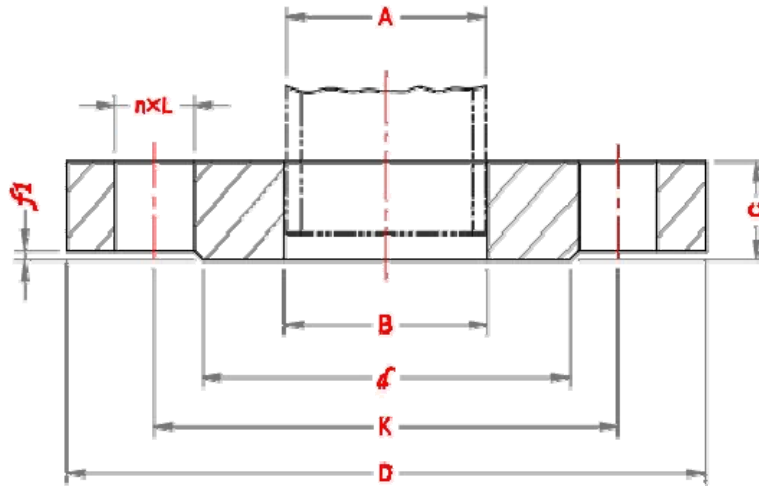
DN	Pipe OD, A	Outside Diameter, D	Diameter of Bolt Circle, K	Dia of Bolt Hole, L	No. of bolt	Size of Bolt	Flange thickness, C	Diameter of Raised Face, d	Height of Raised Face, f1	Bore diameter, B
10	17.2	90	60	14	4	M12	14	40	2	18
15	21.3	95	65	14	4	M12	14	45	2	22
20	26.9	105	75	14	4	M12	16	58	2	27.5
25	33.7	115	85	14	4	M12	16	68	2	34.5
32	42.4	140	100	18	4	M16	18	78	2	43.5
40	48.3	150	110	18	4	M16	18	88	3	49.5
50	60.3	165	125	18	4	M16	20	102	3	61.5
65	76.1	185	145	18	8	M16	20	122	3	77.5
80	88.9	200	160	18	8	M16	20	138	3	90.5
100	114.3	220	180	18	8	M16	22	158	3	116
125	139.7	250	210	18	8	M16	22	188	3	141.5
150	168.3	285	240	22	8	M20	24	212	3	170.5
200	219.1	340	295	22	8	M20	24	268	3	221.5
250	273	395	350	22	12	M20	26	320	3	276.5
300	323.9	445	400	22	12	M20	26	370	4	327.5
350	355.6	505	460	22	16	M20	30	430	4	359.5
400	406.4	565	515	26	16	M24	32	482	4	411
450	457	615	565	26	20	M24	36	532	4	462
500	508	670	620	26	20	M24	38	585	4	513.5
600	610	780	725	30	20	M27	42	685	5	616.5
700	711	895	840	30	24	M27	50	800	5	715
800	813	1015	950	33	24	M30	56	905	5	817
900	914	1115	1050	33	28	M30	62	1005	5	918
1000	1016	1230	1160	36	28	M33	70	1110	5	1020
1200	1219	1455	1380	39	32	M36	83	1330	5	1223
1400	1422	1675	1590	42	36	M39	90	1535	5	1426
1600	1626	1915	1820	48	40	M45	100	1760	5	1630
1800	1829	2115	2020	48	44	M45	110	1960	5	1833
2000	2032	2325	2230	48	48	M45	120	2170	5	2036

## Dimensions of plate flanges EN 1092-1 Type 01 / PN16



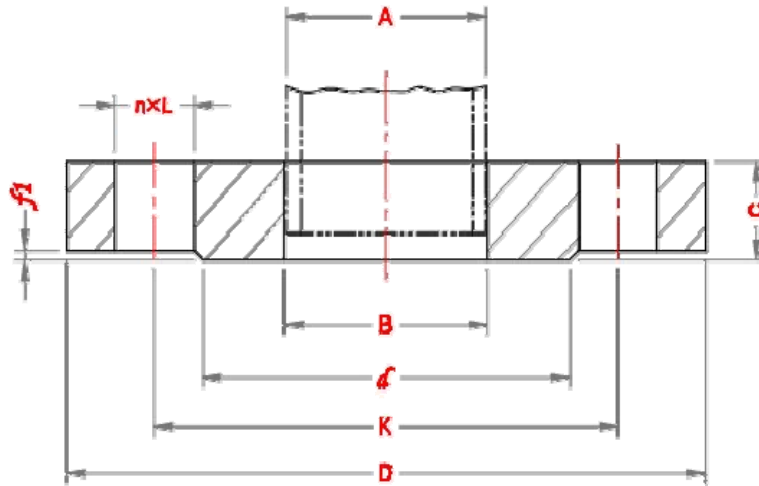
DN	Pipe OD, A	Outside Diamete, D	Diameter of Bolt Circle, K	Dia of Bolt Hole, L	No. of bolt	Size of Bolt	Flange thickness, C	Diameter of Raised Face, d	Height of Raised Face, f1	Bore diameter, B
10	17.2	90	60	14	4	M12	14	40	2	18
15	21.3	95	65	14	4	M12	14	45	2	22
20	26.9	105	75	14	4	M12	16	58	2	27.5
25	33.7	115	85	14	4	M12	16	68	2	34.5
32	42.4	140	100	18	4	M16	18	78	2	43.5
40	48.3	150	110	18	4	M16	18	88	3	49.5
50	60.3	165	125	18	4	M16	20	102	3	61.5
65	76.1	185	145	18	8	M16	20	122	3	77.5
80	88.9	200	160	18	8	M16	20	138	3	90.5
100	114.3	220	180	18	8	M16	22	158	3	116
125	139.7	250	210	18	8	M16	22	188	3	141.5
150	168.3	285	240	22	8	M20	24	212	3	170.5
200	219.1	340	295	22	12	M20	26	268	3	221.5
250	273	405	355	26	12	M24	29	320	3	276.5
300	323.9	460	410	26	12	M24	32	378	4	327.5
350	355.6	520	470	26	16	M24	35	438	4	359.5
400	406.4	580	525	30	16	M27	38	490	4	411
450	457	640	585	30	20	M27	42	550	4	462
500	508	715	650	33	20	M30	46	610	4	513.5
600	610	840	770	36	20	M33	55	725	5	616.5
700	711	910	840	36	24	M33	63	795	5	715
800	813	1025	950	39	24	M36	74	900	5	817
900	914	1125	1050	39	28	M36	82	1000	5	918
1000	1016	1255	1170	42	28	M39	90	1115	5	1020
1200	1219	1485	1390	48	32	M45	95	1330	5	1223
1400	1422	1685	1590	48	36	M45	103	1530	5	1426
1600	1626	1930	1820	56	40	M52	115	1750	5	1630
1800	1829	2130	2020	56	44	M52	126	1950	5	1833
2000	2032	2345	2230	62	48	M56	138	2150	5	2036

## Dimensions of plate flanges EN 1092-1 Type 01 / PN25



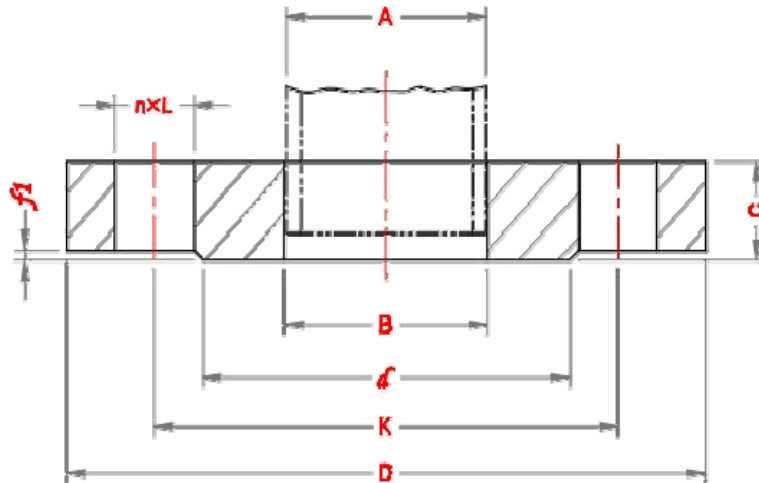
DN	Pipe OD, A	Outside Diameter, D	Diameter of Bolt Circle, K	Dia of Bolt Hole, L	No. of bolt	Size of Bolt	Flange thickness, C	Diameter of Raised Face, d	Height of Raised Face, f1	Bore diameter, B
10	17.2	90	60	14	4	M12	14	40	2	18
15	21.3	95	65	14	4	M12	14	45	2	22
20	26.9	105	75	14	4	M12	16	58	2	27.5
25	33.7	115	85	14	4	M12	16	68	2	34.5
32	42.4	140	100	18	4	M16	18	78	2	43.5
40	48.3	150	110	18	4	M16	18	88	3	49.5
50	60.3	165	125	18	4	M16	20	102	3	61.5
65	76.1	185	145	18	8	M16	22	122	3	77.5
80	88.9	200	160	18	8	M16	24	138	3	90.5
100	114.3	235	190	22	8	M20	26	162	3	116
125	139.7	270	220	26	8	M24	28	188	3	141.5
150	168.3	300	250	26	8	M24	30	218	3	170.5
200	219.1	360	310	26	12	M24	32	278	3	221.5
250	273	435	370	30	12	M27	35	335	3	276.5
300	323.9	485	430	30	16	M27	38	395	4	327.5
350	355.6	555	490	33	16	M30	42	450	4	359.5
400	406.4	620	550	36	16	M33	48	505	4	411
450	457	670	600	36	20	M33	54	555	4	462
500	508	730	660	36	20	M33	58	615	4	513.5
600	610	845	770	39	20	M36	68	720	5	616.5
700	711	960	875	42	24	M39	85	820	5	715
800	813	1085	990	48	24	M45	95	930	5	817

## Dimensions of plate flanges EN 1092-1 Type 01 / PN40



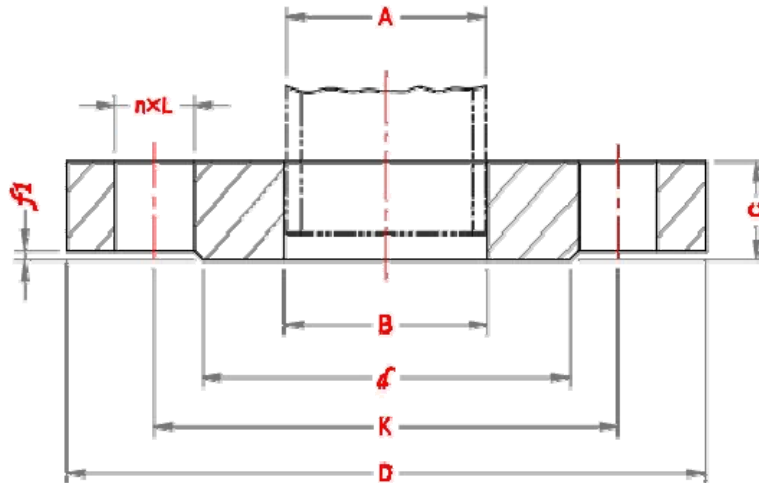
DN	Pipe OD, A	Outside Diameter, D	Diameter of Bolt Circle, K	Dia of Bolt Hole, L	No. of bolt	Size of Bolt	Flange thickness, C	Diameter of Raised Face, d	Height of Raised Face, f1	Bore diameter, B
10	17.2	90	60	14	4	M12	14	40	2	18
15	21.3	95	65	14	4	M12	14	45	2	22
20	26.9	105	75	14	4	M12	16	58	2	27.5
25	33.7	115	85	14	4	M12	16	68	2	34.5
32	42.4	140	100	18	4	M16	18	78	2	43.5
40	48.3	150	110	18	4	M16	18	88	3	49.5
50	60.3	165	125	18	4	M16	20	102	3	61.5
65	76.1	185	145	18	8	M16	22	122	3	77.5
80	88.9	200	160	18	8	M16	24	138	3	90.5
100	114.3	235	190	22	8	M20	26	162	3	116
125	139.7	270	220	26	8	M24	28	188	3	141.5
150	168.3	300	250	26	8	M24	30	218	3	170.5
200	219.1	375	320	30	12	M27	36	285	3	221.5
250	273	450	385	33	12	M30	42	345	3	276.5
300	323.9	515	450	33	16	M30	52	410	4	327.5
350	355.6	580	510	36	16	M33	58	465	4	359.5
400	406.4	660	585	39	16	M36	65	535	4	411
450	457	685	610	39	20	M36	66	560	4	462
500	508	755	670	42	20	M39	72	615	4	513.5
600	610	890	795	48	20	M45	84	735	5	616.5

## Dimensions of plate flanges EN 1092-1 Type 01 / PN63



DN	Pipe OD, A	Outside Diameter, D	Diameter of Bolt Circle, K	Dia of Bolt Hole, L	No. of bolt	Size of Bolt	Flange thickness, C	Diameter of Raised Face, d	Height of Raised Face, f1	Bore diameter, B
10	17.2	100	70	14	4	M12	20	40	2	18
15	21.3	105	75	14	4	M12	20	45	2	22
20	26.9	130	90	18	4	M16	22	58	2	27.5
25	33.7	140	100	18	4	M16	24	68	2	34.5
32	42.4	155	110	22	4	M20	24	78	2	43.5
40	48.3	170	125	22	4	M20	26	88	3	49.5
50	60.3	180	135	22	4	M20	26	102	3	61.5
65	76.1	205	160	22	8	M20	26	122	3	77.5
80	88.9	215	170	22	8	M20	30	138	3	90.5
100	114.3	250	200	26	8	M24	32	162	3	116
125	139.7	295	240	30	8	M27	34	188	3	141.5
150	168.3	345	280	33	8	M30	36	218	3	170.5
200	219.1	415	345	36	12	M33	48	285	3	221.5
250	273	470	400	36	12	M33	55	345	3	276.5
300	323.9	530	460	36	16	M33	65	410	4	327.5
350	355.6	600	525	39	16	M36	72	465	4	359.5
400	406.4	670	585	42	16	M39	80	535	4	411

## Dimensions of plate flanges EN 1092-1 Type 01 / PN100



DN	Pipe OD, A	Outside Diameter, D	Diameter of Bolt Circle, K	Dia of Bolt Hole, L	No. of bolt	Size of Bolt	Flange thickness, C	Diameter of Raised Face, d	Height of Raised Face, f1	Bore diameter, B
10	17.2	100	70	14	4	M12	20	40	2	18
15	21.3	105	75	14	4	M12	20	45	2	22
20	26.9	130	90	18	4	M16	22	58	2	27.5
25	33.7	140	100	18	4	M16	24	68	2	34.5
32	42.4	155	110	22	4	M20	24	78	2	43.5
40	48.3	170	125	22	4	M20	26	88	3	49.5
50	60.3	195	145	26	4	M24	28	102	3	61.5
65	76.1	220	170	26	8	M24	30	122	3	77.5
80	88.9	230	180	26	8	M24	34	138	3	90.5
100	114.3	265	210	30	8	M27	36	162	3	116
125	139.7	315	250	33	8	M30	42	188	3	141.5
150	168.3	355	290	33	12	M30	48	218	3	170.5
200	219.1	430	360	36	12	M33	60	285	3	221.5
250	273	505	430	39	12	M36	72	345	3	276.5
300	323.9	585	500	42	16	M39	84	410	4	327.5
350	355.6	655	560	48	16	M45	95	465	4	359.5