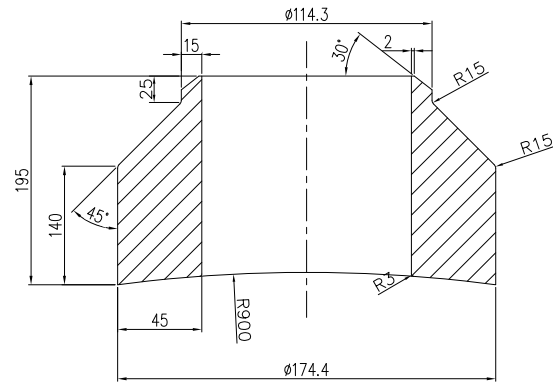


与HA1800×76封头内壁吻合
MATCH WITH INNER WALL OF HEAD

技术要求
REQUIREMENT

- 除了特别规定所有的尺寸都应该以 mm 为单位。
ALL DIMENSIONS ARE IN mm UNLESS OTHERWISE NOTED.
- 所有零件应除去周边毛刺。
ALL BURR SHALL BE REMOVED.

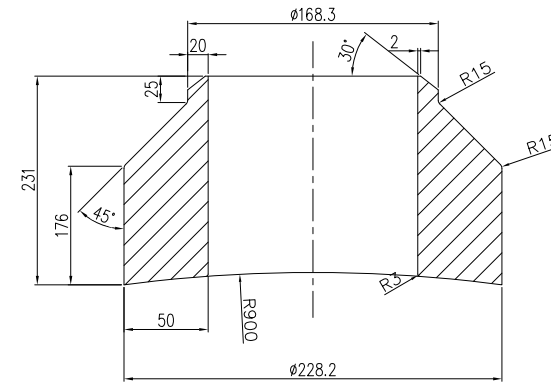
N1-2	加强管 10" FORGING PIPE	SA-105N	214	/	ASME19-04-01	ASME19-04-00
件号 P.N.	名称 NAME	材料 MATERIAL	重量 W.T. (Kg)	比例 SCALE	所在图号 DWG. NO.	装配图号 ASSEM. DWG.



技术要求
REQUIREMENT

- 除了特别规定所有的尺寸都应该以 mm 为单位。
ALL DIMENSIONS ARE IN mm UNLESS OTHERWISE NOTED.
- 所有零件应除去周边毛刺。
ALL BURR SHALL BE REMOVED.

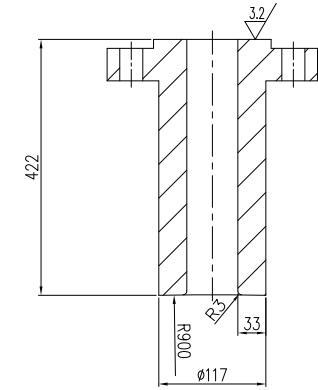
N2-2	加强管 4" FORGING PIPE	SA-105N	28	/	ASME19-04-01	ASME19-04-00
件号 P.N.	名称 NAME	材料 MATERIAL	重量 W.T. (Kg)	比例 SCALE	所在图号 DWG. NO.	装配图号 ASSEM. DWG.



技术要求
REQUIREMENT

- 除了特别规定所有的尺寸都应该以 mm 为单位。
ALL DIMENSIONS ARE IN mm UNLESS OTHERWISE NOTED.
- 所有零件应除去周边毛刺。
ALL BURR SHALL BE REMOVED.

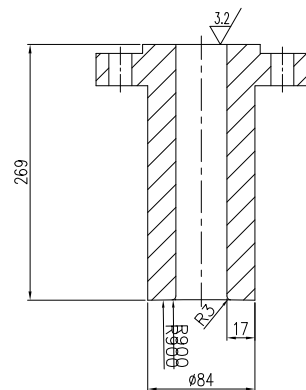
N3-2	加强管 6" FORGING PIPE	SA-105N	50.8	/	ASME19-04-01	ASME19-04-00
件号 P.N.	名称 NAME	材料 MATERIAL	重量 W.T. (Kg)	比例 SCALE	所在图号 DWG. NO.	装配图号 ASSEM. DWG.



技术要求
REQUIREMENT

- 法兰的制造要求参照 ASME B16.5。
THE MANUFACTURE AND INSPECTION SPECIFICATION OF THE FLANGE AS PER ASME B16.5.
- 法兰上相邻两螺栓孔长公差为±0.6mm,任意两螺栓孔长公差为±1.0mm。
THE DISTANCE ALLOWANCE BETWEEN TWO ADJACENT BOLTS HOLES IN THE TUBESHEET SHOULD BE ±0.6MM, THE DISTANCE ALLOWANCE BETWEEN TWO ARBITRARY BOLTS SHOULD BE ±1.0MM.
- 其余按装配图。
OTHERS ACCORDING TO THE ASSEMBLY DRAWING.

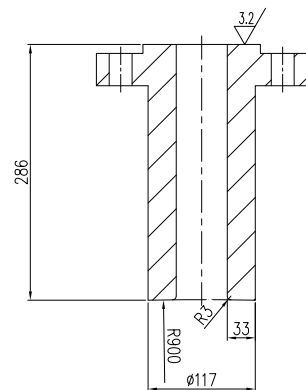
N4-1	法兰 3"-600# LWN/Rf FLANGE	SA-105N	35	/	ASME19-04-02	ASME19-04-00
件号 P.N.	名称 NAME	材料 MATERIAL	重量 W.T. (Kg)	比例 SCALE	所在图号 DWG. NO.	装配图号 ASSEM. DWG.



技术要求
REQUIREMENT

- 其余未注尺寸及法兰的制造要求参照 ASME B16.5。
THE MANUFACTURE AND INSPECTION SPECIFICATION OF THE FLANGE AS PER ASME B16.5. AND THE NOT INDICATED DIMENSIONS ALSO AS PER THE FLANGE COAD ASME B16.5.
- 其余按装配图。
OTHERS ACCORDING TO THE ASSEMBLY DRAWING.

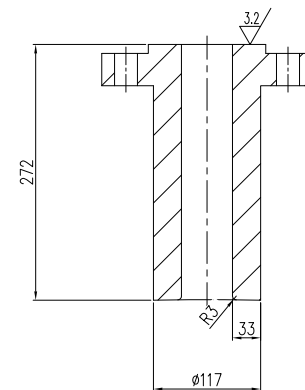
N5-1	法兰 2"-600# LWN/Rf FLANGE	SA-105N	12	/	ASME19-04-01	ASME19-04-00
P1-1	法兰 2"-600# LWN/Rf FLANGE	SA-105N	12	/	ASME19-04-01	ASME19-04-00
件号 P.N.	名称 NAME	材料 MATERIAL	重量 W.T. (Kg)	比例 SCALE	所在图号 DWG. NO.	装配图号 ASSEM. DWG.



技术要求
REQUIREMENT

- 法兰的制造要求参照 ASME B16.5。
THE MANUFACTURE AND INSPECTION SPECIFICATION OF THE FLANGE AS PER ASME B16.5.
- 法兰上相邻两螺栓孔长公差为±0.6mm,任意两螺栓孔长公差为±1.0mm。
THE DISTANCE ALLOWANCE BETWEEN TWO ADJACENT BOLTS HOLES IN THE TUBESHEET SHOULD BE ±0.6MM, THE DISTANCE ALLOWANCE BETWEEN TWO ARBITRARY BOLTS SHOULD BE ±1.0MM.
- 其余按装配图。
OTHERS ACCORDING TO THE ASSEMBLY DRAWING.

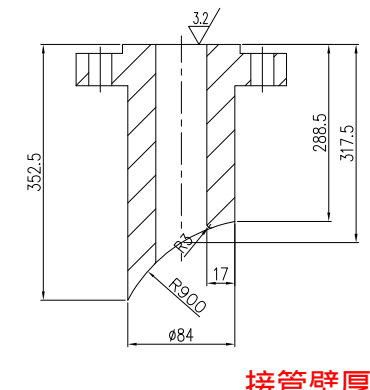
N6-1	法兰 3"-600# LWN/Rf FLANGE	SA-105N	30	/	ASME19-04-02	ASME19-04-00
件号 P.N.	名称 NAME	材料 MATERIAL	重量 W.T. (Kg)	比例 SCALE	所在图号 DWG. NO.	装配图号 ASSEM. DWG.



技术要求
REQUIREMENT

- 法兰的制造要求参照 ASME B16.5。
THE MANUFACTURE AND INSPECTION SPECIFICATION OF THE FLANGE AS PER ASME B16.5.
- 法兰上相邻两螺栓孔长公差为±0.6mm,任意两螺栓孔长公差为±1.0mm。
THE DISTANCE ALLOWANCE BETWEEN TWO ADJACENT BOLTS HOLES IN THE TUBESHEET SHOULD BE ±0.6MM, THE DISTANCE ALLOWANCE BETWEEN TWO ARBITRARY BOLTS SHOULD BE ±1.0MM.
- 其余按装配图。
OTHERS ACCORDING TO THE ASSEMBLY DRAWING.

N7A/B/C-1	法兰 3"-600# LWN/Rf FLANGE	SA-105N	30	/	ASME19-04-02	ASME19-04-00
件号 P.N.	名称 NAME	材料 MATERIAL	重量 W.T. (Kg)	比例 SCALE	所在图号 DWG. NO.	装配图号 ASSEM. DWG.

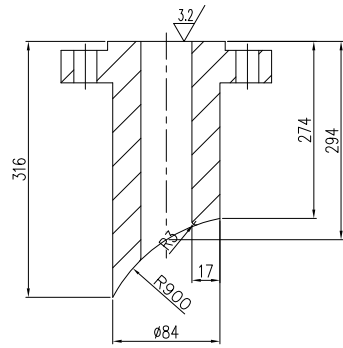


技术要求
REQUIREMENT

- 其余未注尺寸及法兰的制造要求参照 ASME B16.5。
THE MANUFACTURE AND INSPECTION SPECIFICATION OF THE FLANGE AS PER ASME B16.5. AND THE NOT INDICATED DIMENSIONS ALSO AS PER THE FLANGE COAD ASME B16.5.
- 其余按装配图。
OTHERS ACCORDING TO THE ASSEMBLY DRAWING.

N8A/B-1	法兰 2"-600# LWN/Rf FLANGE	SA-105N	14	/	ASME19-04-03	ASME19-04-00
件号 P.N.	名称 NAME	材料 MATERIAL	重量 W.T. (Kg)	比例 SCALE	所在图号 DWG. NO.	装配图号 ASSEM. DWG.

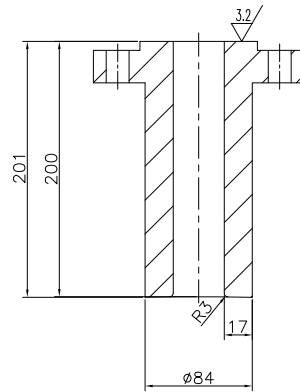
接管壁厚改为22mm



技术要求
REQUIREMENT

1. 其余未注尺寸及法兰的制造要求参照 ASME B16.5.
THE MANUFACTURE AND INSPECTION SPECIFICATION OF THE FLANGE AS PER ASME B16.5.
AND THE NOT INDICATED DIMENSIONS ALSO AS PER THE FLANGE COAD ASME B16.5.
2. 其余按装配图。
OTHERS ACCORDING TO THE ASSEMBLY DRAWING.

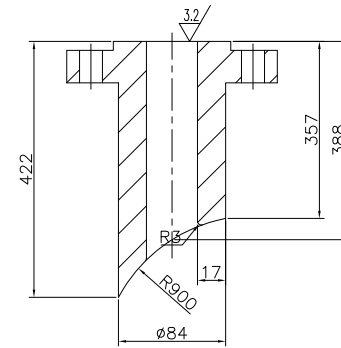
L1A-1	法兰 2"-600#LWN/RF FLANGE	SA-105N	20	/	ASME19-04-02	ASME19-04-00
LSB-1	法兰 2"-600#LWN/RF FLANGE	SA-105N	20	/	ASME19-04-02	ASME19-04-00
件号 P.N.	名称 NAME	材料 MATERIAL	重量 W.T. (Kg)	比例 SCALE	所在图号 DWG. NO.	装配图号 ASSEM. DWG.



技术要求
REQUIREMENT

1. 其余未注尺寸及法兰的制造要求参照 ASME B16.5.
THE MANUFACTURE AND INSPECTION SPECIFICATION OF THE FLANGE AS PER ASME B16.5.
AND THE NOT INDICATED DIMENSIONS ALSO AS PER THE FLANGE COAD ASME B16.5.
2. 其余按装配图。
OTHERS ACCORDING TO THE ASSEMBLY DRAWING.

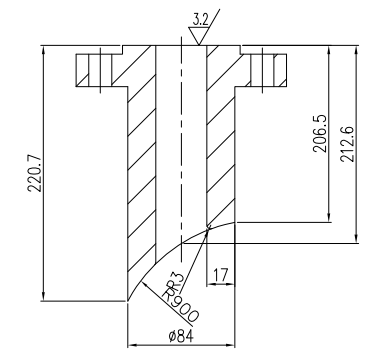
L1B-1	法兰 2"-600#LWN/RF FLANGE	SA-105N	10	/	ASME19-04-03	ASME19-04-00
件号 P.N.	名称 NAME	材料 MATERIAL	重量 W.T. (Kg)	比例 SCALE	所在图号 DWG. NO.	装配图号 ASSEM. DWG.



技术要求
REQUIREMENT

1. 其余未注尺寸及法兰的制造要求参照 ASME B16.5.
THE MANUFACTURE AND INSPECTION SPECIFICATION OF THE FLANGE AS PER ASME B16.5.
AND THE NOT INDICATED DIMENSIONS ALSO AS PER THE FLANGE COAD ASME B16.5.
2. 其余按装配图。
OTHERS ACCORDING TO THE ASSEMBLY DRAWING.

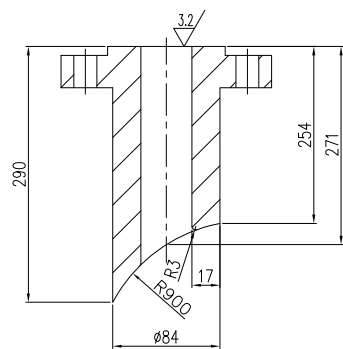
L2A-1	法兰 2"-600#LWN/RF FLANGE	SA-105N	16	/	ASME19-04-03	ASME19-04-00
件号 P.N.	名称 NAME	材料 MATERIAL	重量 W.T. (Kg)	比例 SCALE	所在图号 DWG. NO.	装配图号 ASSEM. DWG.



技术要求
REQUIREMENT

1. 其余未注尺寸及法兰的制造要求参照 ASME B16.5.
THE MANUFACTURE AND INSPECTION SPECIFICATION OF THE FLANGE AS PER ASME B16.5.
AND THE NOT INDICATED DIMENSIONS ALSO AS PER THE FLANGE COAD ASME B16.5.
2. 其余按装配图。
OTHERS ACCORDING TO THE ASSEMBLY DRAWING.

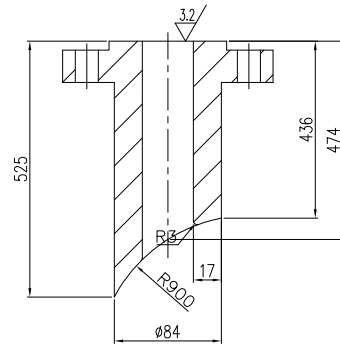
L2B-1	法兰 2"-600#LWN/RF FLANGE	SA-105N	12	/	ASME19-04-02	ASME19-04-00
件号 P.N.	名称 NAME	材料 MATERIAL	重量 W.T. (Kg)	比例 SCALE	所在图号 DWG. NO.	装配图号 ASSEM. DWG.



技术要求
REQUIREMENT

1. 其余未注尺寸及法兰的制造要求参照 ASME B16.5.
THE MANUFACTURE AND INSPECTION SPECIFICATION OF THE FLANGE AS PER ASME B16.5.
AND THE NOT INDICATED DIMENSIONS ALSO AS PER THE FLANGE COAD ASME B16.5.
2. 其余按装配图。
OTHERS ACCORDING TO THE ASSEMBLY DRAWING.

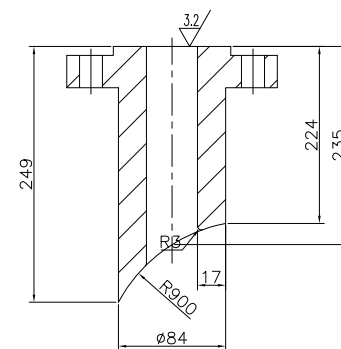
L3A-1	法兰 2"-600#LWN/RF FLANGE	SA-105N	15	/	ASME19-04-02	ASME19-04-00
(T1-1)	法兰 2"-600#LWN/RF FLANGE	SA-105N	15	/	ASME19-04-02	ASME19-04-00
件号 P.N.	名称 NAME	材料 MATERIAL	重量 W.T. (Kg)	比例 SCALE	所在图号 DWG. NO.	装配图号 ASSEM. DWG.



技术要求
REQUIREMENT

1. 法兰的制造要求参照 ASME B16.5.
THE MANUFACTURE AND INSPECTION SPECIFICATION OF THE FLANGE AS PER ASME B16.5.
2. 法兰上相邻两螺栓孔长公差为±0.6mm, 任意两螺栓孔长公差为±1.0mm。
THE DISTANCE ALLOWANCE BETWEEN TWO ADJACENT BOLTS HOLES IN THE TUBESHEET SHOULD BE ±0.6MM, THE DISTANCE ALLOWANCE BETWEEN TWO ARBITRARY BOLTS SHOULD BE ±1.0MM.
3. 其余按装配图。
OTHERS ACCORDING TO THE ASSEMBLY DRAWING.

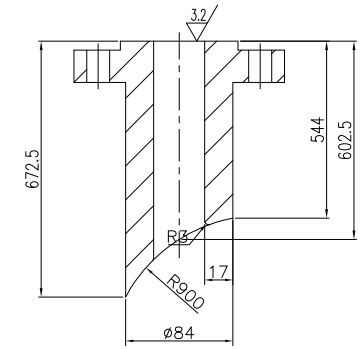
L3B-1	法兰 2"-600#LWN/RF FLANGE	SA-105N	20	/	ASME19-04-03	ASME19-04-00
件号 P.N.	名称 NAME	材料 MATERIAL	重量 W.T. (Kg)	比例 SCALE	所在图号 DWG. NO.	装配图号 ASSEM. DWG.



技术要求
REQUIREMENT

1. 其余未注尺寸及法兰的制造要求参照 ASME B16.5.
THE MANUFACTURE AND INSPECTION SPECIFICATION OF THE FLANGE AS PER ASME B16.5.
AND THE NOT INDICATED DIMENSIONS ALSO AS PER THE FLANGE COAD ASME B16.5.
2. 其余按装配图。
OTHERS ACCORDING TO THE ASSEMBLY DRAWING.

L4A-1	法兰 2"-600#LWN/RF FLANGE	SA-105N	14	/	ASME19-04-03	ASME19-04-00
件号 P.N.	名称 NAME	材料 MATERIAL	重量 W.T. (Kg)	比例 SCALE	所在图号 DWG. NO.	装配图号 ASSEM. DWG.

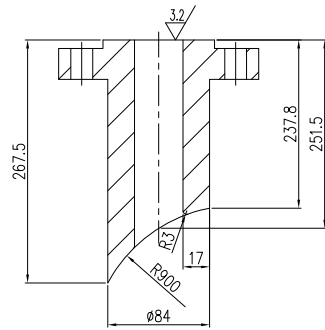


技术要求
REQUIREMENT

1. 法兰的制造要求参照 ASME B16.5.
THE MANUFACTURE AND INSPECTION SPECIFICATION OF THE FLANGE AS PER ASME B16.5.
2. 法兰上相邻两螺栓孔长公差为±0.6mm, 任意两螺栓孔长公差为±1.0mm。
THE DISTANCE ALLOWANCE BETWEEN TWO ADJACENT BOLTS HOLES IN THE TUBESHEET SHOULD BE ±0.6MM, THE DISTANCE ALLOWANCE BETWEEN TWO ARBITRARY BOLTS SHOULD BE ±1.0MM.
3. 其余按装配图。
OTHERS ACCORDING TO THE ASSEMBLY DRAWING.

L4B-1	法兰 2"-600#LWN/RF FLANGE	SA-105N	25	/	ASME19-04-03	ASME19-04-00
件号 P.N.	名称 NAME	材料 MATERIAL	重量 W.T. (Kg)	比例 SCALE	所在图号 DWG. NO.	装配图号 ASSEM. DWG.

OTHERS 12.5

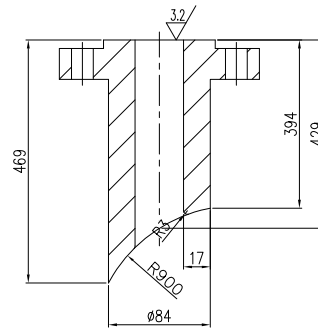


技术要求
REQUIREMENT

1. 其余未注尺寸及法兰的制造要求参照 ASME B16.5.
THE MANUFACTURE AND INSPECTION SPECIFICATION OF THE FLANGE AS PER ASME B16.5.
AND THE NOT INDICATED DIMENSIONS ALSO AS PER THE FLANGE COAD ASME B16.5.
2. 其余按装配图。
OTHERS ACCORDING TO THE ASSEMBLY DRAWING.

L5A-1	法兰 2"-600#LWN/RF FLANGE	SA-105N	14	/	ASME19-04-02	ASME19-04-00
L6A-1	法兰 2"-600#LWN/RF FLANGE	SA-105N	14	/	ASME19-04-02	ASME19-04-00
件号 P.N.	名称 NAME	材料 MATERIAL	重量 (Kg) W.T.	比例 SCALE	所在图号 DWG. NO.	装配图号 ASSEM. DWG.

OTHERS 12.5

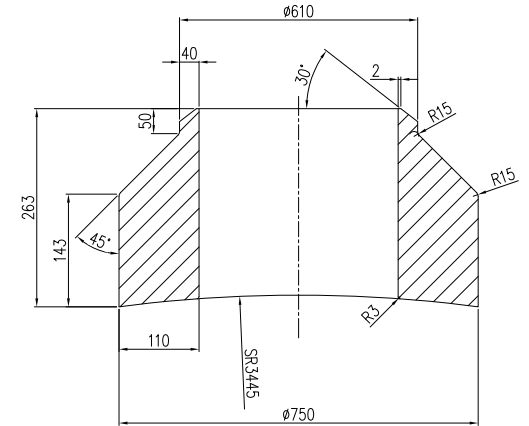


技术要求
REQUIREMENT

1. 其余未注尺寸及法兰的制造要求参照 ASME B16.5.
THE MANUFACTURE AND INSPECTION SPECIFICATION OF THE FLANGE AS PER ASME B16.5.
AND THE NOT INDICATED DIMENSIONS ALSO AS PER THE FLANGE COAD ASME B16.5.
2. 其余按装配图。
OTHERS ACCORDING TO THE ASSEMBLY DRAWING.

L6B-1	法兰 2"-600#LWN/RF FLANGE	SA-105N	22	/	ASME19-04-02	ASME19-04-00
件号 P.N.	名称 NAME	材料 MATERIAL	重量 (Kg) W.T.	比例 SCALE	所在图号 DWG. NO.	装配图号 ASSEM. DWG.

OTHERS 12.5



技术要求
REQUIREMENT

1. 除了特别规定所有的尺寸都应该以 mm 为单位。
ALL DIMENSIONS ARE IN mm UNLESS OTHERWISE NOTED.
2. 所有零件应除去周边毛刺。
ALL BURR SHALL BE REMOVED.

M1-1-7	加强管 FORGING PIPE	SA-105N	22	/	ASME19-04-02	ASME19-04-00
件号 P.N.	名称 NAME	材料 MATERIAL	重量 (Kg) W.T.	比例 SCALE	所在图号 DWG. NO.	装配图号 ASSEM. DWG.